

EuroShop, Düsseldorf, 5th to 9th March 2017

## **Nature that you can see and feel**

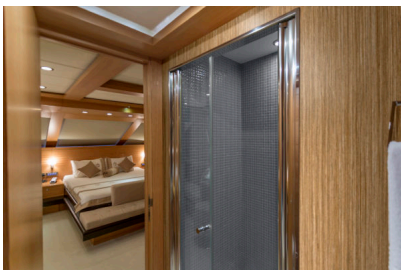
With real wood veneers, Homapal creates authentic surfaces

**At Euroshop 2017 in Düsseldorf, Homapal demonstrates how the original naturalness of wood can extend its particular charm into modern stores and interior designs. The new stock collection includes ten real wood veneers pressed into laminate, better known on the market as „reconstituted veneer“. An order collection of 17 modern veneers compliments the range. The complete veneer range is based on current trends and reflects the broad spectrum of wood tones found in nature.**

Homapal uses layered veneers for its exclusive veneer laminates, that is to say natural products with the typical characteristics of wood. Peeled veneers from poplar, koto and ayous wood are partly dyed, rejoined together in layers and pressed to a block to produce these layered veneers. The veneers are then sliced from this block. Homapal then presses these reconstituted veneers into laminates, coats the surface with melamine resin and covers the product with a protective film. The appearance of the veneers deviate only slightly from board to board.

The manufacturing process enables the reproduction of the most popular but also exotic species of wood. This saves valuable resources without having to give up special or extravagant decors. All woods used by Homapal are sourced from sustainably managed cultivable land.

Authentic structures and a large selection of colours are the prominent features of the veneer collection. Combinations of smooth and structured surfaces create pleasingly warm and harmonious impressions. On request, Homapal veneer laminates can be delivered in IMO quality, i.e. specially suited for ship building, in FSC mix quality or in accordance with DIN EN 13501-1:2010-01. The veneer laminates are free of formaldehyde in accordance with DIN EN 717-1 as confirmed by eph Entwicklungs- und Prüflabor Holztechnologie GmbH, Dresden.



*Caption: "H54/010 – Pekan Crown Glossy" has a homely, warm and authentic appearance. It is a part of the new Homapal stock collection. This includes ten real wood veneers pressed into laminate. Photo: Homapal*