

FENSTERBAU FRONTALE, July 12 to 15, 2022

Functional fusion at BaSys: Hinge and door closer as a team on a concealed mission

With the „Pivota DXS Close 2.0“, Basys is presenting the revised and patented version of its concealed door hinge with integrated door closer at Fensterbau Frontale 2022. The first version impressed right from the start at BAU 2017 and won the „Architecture + Construction Innovation Award“. With the update, Basys replaces the short-lived gas pull spring and expands the adjustment options.

With the concealed hinge „Pivota DXS 3-D Close“ doors close gently and automatically. Version 2.0 is equipped with a steel joint and an associated closing mechanism that, like the hinge, disappears into the door milling. This means: the technology, including additional components for the integrated door closer, works hidden from view. The hinge remains fully functional: it can be adjusted three-dimensionally and ensures that the door can be opened up to an angle of 180 degrees.

In contrast to the original version, the „Pivota DXS Close 2.0“ is somewhat more compact, resulting only in a larger cut-out in the door leaf. The appearance remains clean. Version 2.0 works mechanically: two springs, each equipped with a spindle, now replace the sensitive and non-adjustable gas spring. The springs can be pre-tensioned via the spindles and the tensile force scaled – depending on the room volume, door widths and door weights. In the new „Pivota DXS Close“, the integrated damping is also mounted in a viscous manner so that the damping strength adapts flexibly to the closing speed of the door.

When the door is opened, the springs are pretensioned. If the door is then no longer held, the closing mechanism pulls on the hinge in a controlled manner so that the door closes automatically. For more safety and comfort, the mechanism, which does not require a separate door closer, brakes the door before it gently and reliably falls into the lock. With this solution, Basys focuses on doors weighing up to 120 kg.

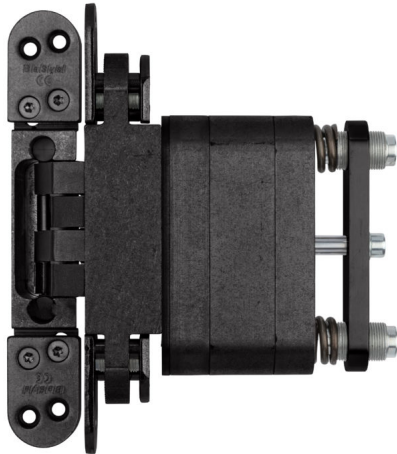
With the update, Basys primarily solves problems that were associated with the purchased gas tension spring. The new design is produced directly in the hardware manufacturer's factory in Kalletal. It is designed for long-lasting and maintenance-free operation with constantly reliable tension and closing force. In addition, the „Pivota DXS Close“ ensures that the door opens smoothly without resistance.



Caption 1: With the concealed hinge "Pivota DXS Close" doors close gently and automatically. Version 2.0 is equipped with a steel joint and an associated closing mechanism that, like the hinge, disappears into the door milling. In contrast to the original version, the "Pivota DXS Close 2.0" is somewhat more compact, resulting only in a larger cut-out in the door leaf. Photo: BaSys



Caption 1: With the concealed hinge "Pivota DXS Close" doors close gently and automatically. Version 2.0 is equipped with a steel joint and an associated closing mechanism that, like the hinge, disappears into the door milling. In contrast to the original version, the "Pivota DXS Close 2.0" is somewhat more compact, resulting only in a larger cut-out in the door leaf. Photo: BaSys



Caption 2: The "Pivota DXS Close 2.0" works mechanically: The springs can be pretensioned and the tensile force scaled via two spindles. The integrated damping is also viscously mounted in version 2.0, so that the damping strength adapts flexibly to the closing speed of the door. Photo: BaSys

BaSys

BaSys stands for Bartels Systembeschläge. The family-owned company run by Albert and Jürgen Bartels has been developing, producing and selling an all-embracing range of building hardware since 1995. With its hinge and striking-plate systems, BaSys regards itself as a problem solver for door and frame manufacturers throughout Europe as well as for national and international customers from retail and the trades. In 2001, the company was the first German manufacturer to present a concealed and three-dimensionally adjustable hinge with the "Pivota" product range, initiating a new design trend in the door industry. At company headquarters in Kalletal, East Westphalia, BaSys employs around 100 members of staff.