

BAU Munich 2023

When the door leaf and frame apply thick: New concealed door hinge overcomes both sides claddings.

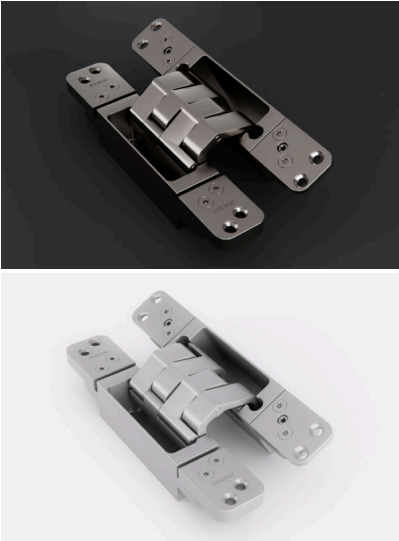
When door leaves and frames are cladded, functional reasons can be decisive, for example for improved sound insulation. Mostly, however, optical arguments play a role, aiming at a modern, flush design.

At BAU 2023, BaSys will be presenting a new solution for overcoming claddings on doors on both the frame and the leaf side with the „Pivota DX 110 3-D“. This hinge is made for flush doors and can therefore be used flexibly. Instead of the usual 8 mm, it can overcome up to 10 mm on both sides for the first time (without a radius on the leaf or frame), which means that the cut-out can be carried out without effecting the cladding. The load capacity of the three-dimensionally adjustable hinge is 100 kilograms per pair. It can be opened up to 140 degrees.



Caption: BaSys is presenting a completely new model at BAU with the "Pivota DX 110 3-D". This concealed hinge overcomes claddings of up to 10 mm on both sides. Photo: Basys





BaSys

BaSys stands for Bartels Systembeschläge. The family-owned company run by Albert and Jürgen Bartels has been developing, producing and selling an all-embracing range of building hardware since 1995. With its hinge and striking-plate systems, BaSys regards itself as a problem solver for door and frame manufacturers throughout Europe as well as for national and international customers from retail and the trades. In 2001, the company was the first German manufacturer to present a concealed and three-dimensionally adjustable hinge with the "Pivota" product range, initiating a new design trend in the door industry. At company headquarters in Kalletal, East Westphalia, BaSys employs around 100 members of staff.